

MONTHLY MEMBERSHIP PROGRESS REPORT

District 27 D1

Results as of: 10/31/2023

GMT:

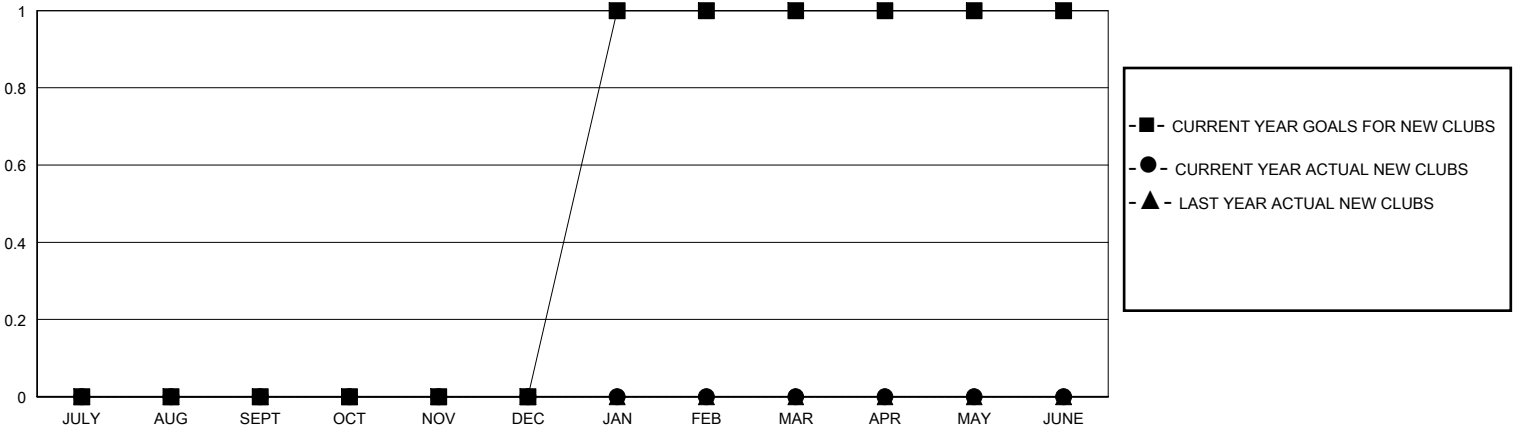
LOCATION WISCONSIN

GMT CA

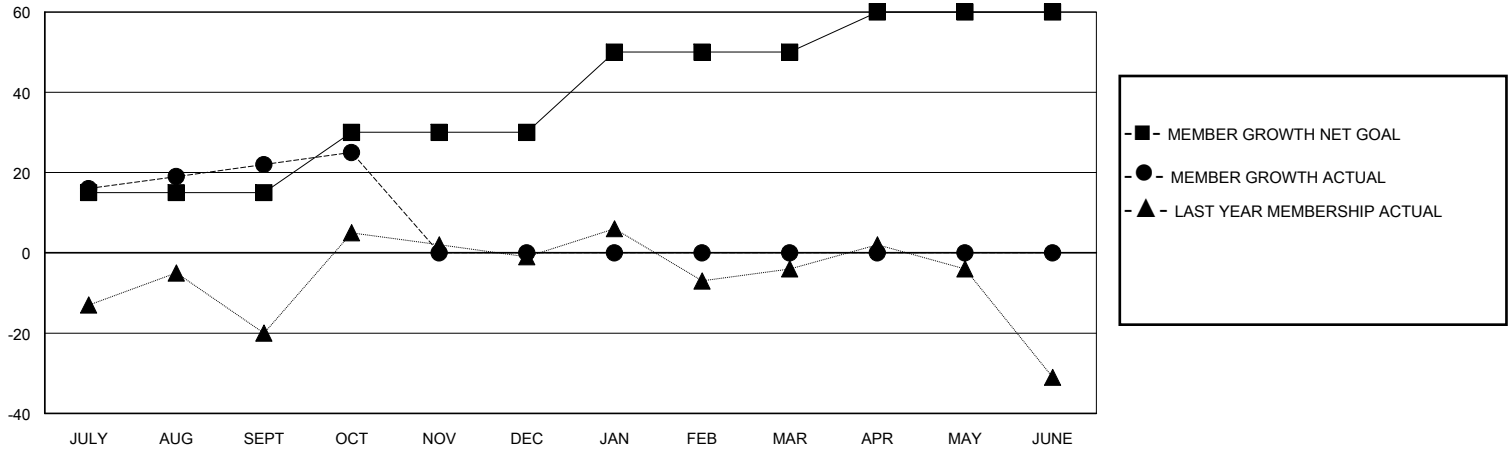
Clubs			
RESULTS FOR 2023-2024			
QUARTER	NEW CLUB GOAL	NEW CLUBS	DROPPED CLUBS
JULY/AUG/SEPT	0	0	0
OCT/NOV/DEC	0	0	0
JAN/FEB/MAR	1	0	0
APR/MAY/JUNE	0	0	0

Members			
RESULTS FOR 2023-2024			
QUARTER	MEMBER GROWTH NET GOAL	MEMBER GROWTH ACTUAL	DROPPED MEMBERS ACTUAL (including transfers)
JULY/AUG/SEPT	15	63	39
OCT/NOV/DEC	15	13	10
JAN/FEB/MAR	20	0	0
APR/MAY/JUNE	10	0	0

GOALS AND ACTUAL NEW CLUBS CUMULATIVE



GOALS AND ACTUAL MEMBERS CUMULATIVE



DROPPED CLUBS: 0	29 CLUBS OF 58 ADDED 1 OR MORE NEW MEMBERS	GENDER DISTRIBUTION MALE 1,423 (67.89%) FEMALE 673 (32.11%)
DROPPED MEMBERS DECEASED 10 CLUB CANCELLED 0 OTHER 39 TOTAL 49	CLICK HERE FOR CUMULATIVE MEMBERSHIP DATA	TOTAL FAMILY UNIT MEMBERS 496 FAMILY MEMBERS PAYING HALF DUES 252